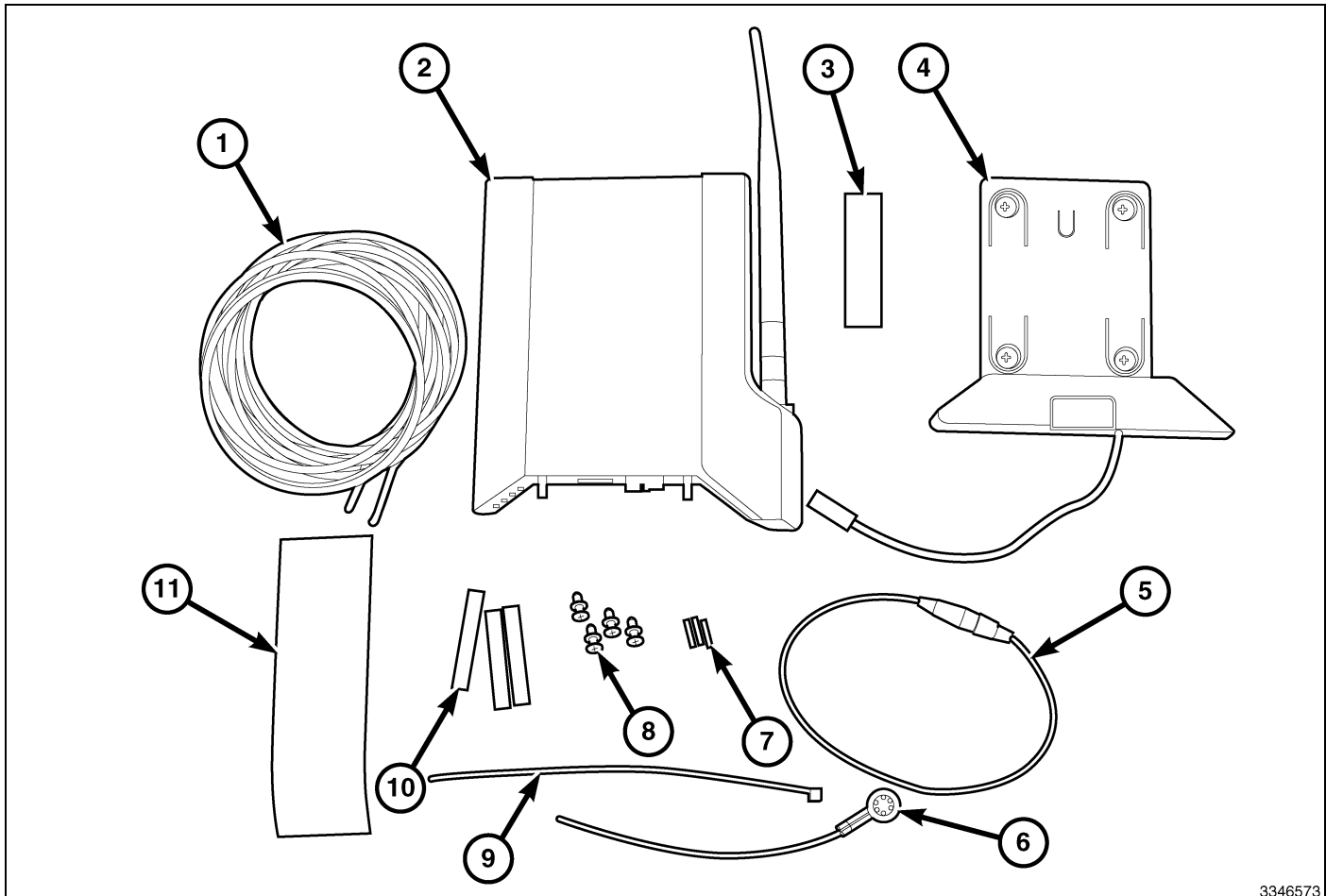




WI-FI ROUTER

FIAT 500



3346573

Call Out	Description	Parts	Quantity
1	Wifi Power and Ground Wires	Supplied in kit	1
2	Wifi Router	Supplied in kit	1
3	Foam Strip	Supplied in kit	2
4	Wifi Docking Station	Supplied in kit	1
5	Fused Wire	Supplied in kit	1
6	Ground Cable	Not Used In This Vehicle	1
7	Wire Connectors	Supplied in kit	3
8	Scrivets	Supplied in kit	4
9	Zip Tie	Supplied in kit	3
10	Heat Shrink Tubing	Supplied in kit	3
11	Velcro Strips	Supplied in kit	2

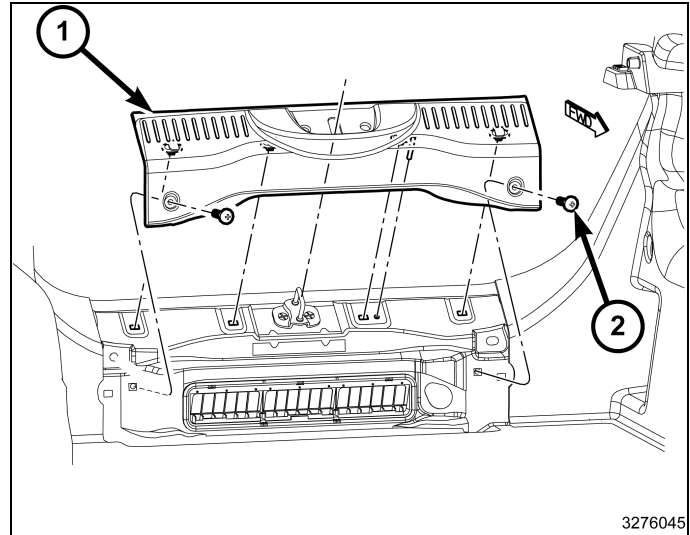
Tools Required

10 mm Socket and Ratchet	Trim Stick C-4755 or equivalent	Phillips Screwdriver
--------------------------	---------------------------------	----------------------

Tools Required		
Ruler or Other Measuring Device	Torx® T25 Bit and Driver	Mopar Crimping Tool or equivalent
Drill	3/8 inch and 3/16 inch Drill Bits	Paint Marker

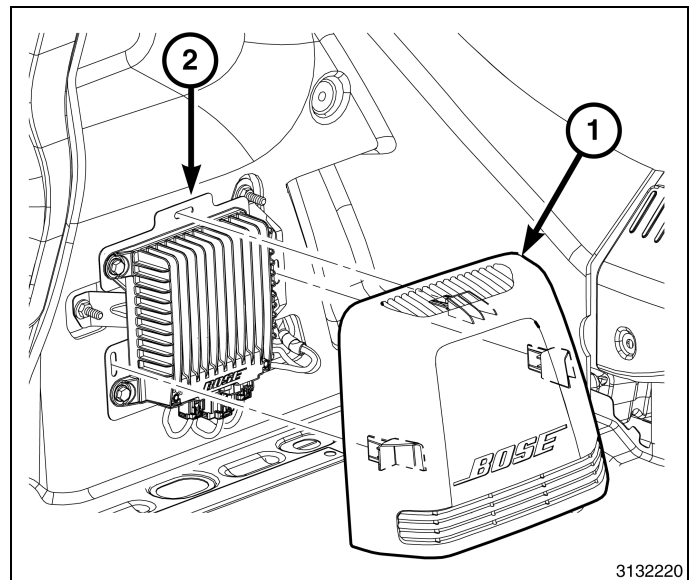
PROCEDURE STEPS:

1. Disconnect the negative battery cable.
2. Open the liftgate.
3. Remove the fasteners (2) securing the scuff plate (1) to the vehicle.
4. Using trim stick C-4755 or equivalent, pry up on each scuff plate clip location hole.
5. Remove the scuff plate (1).

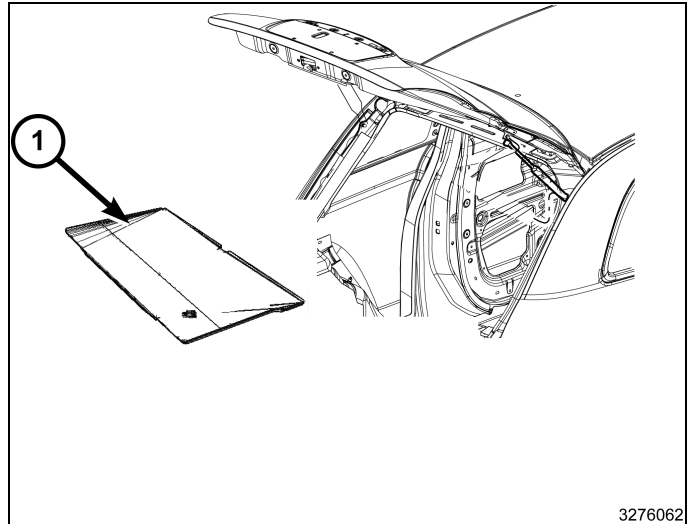


NOTE: The following step applies if the vehicle is equipped with a Bose® amplifier.

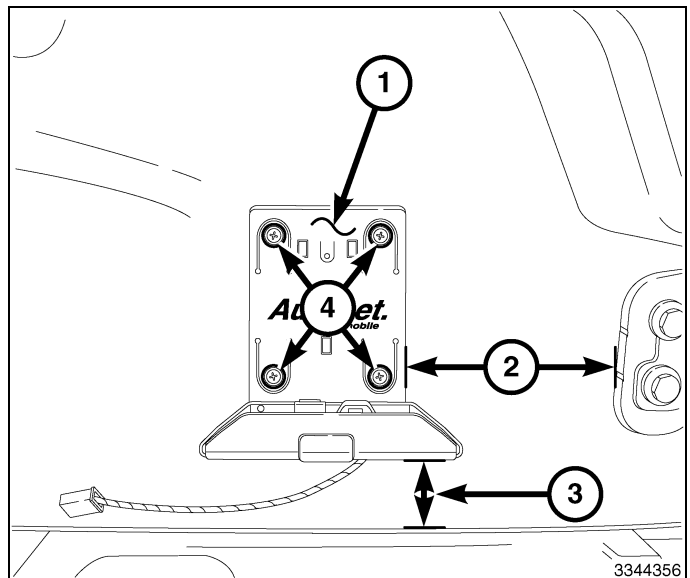
6. Remove the amplifier trim cover (1) from the amplifier mounting bracket (2).



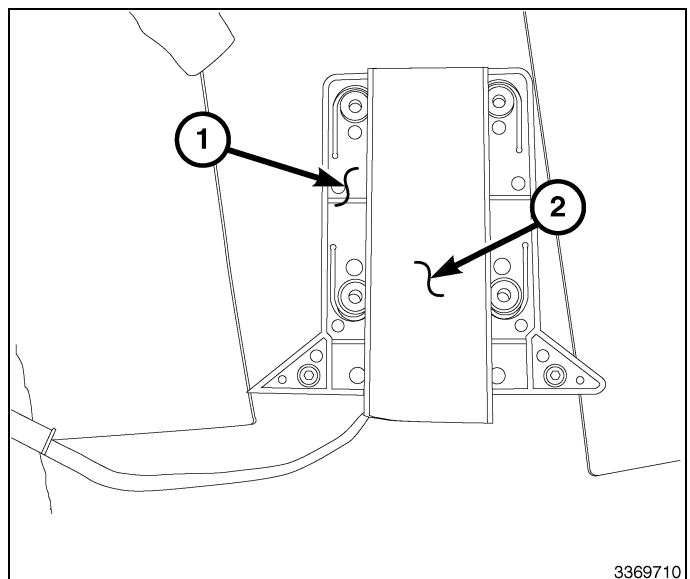
7. Pull outward at the rear of cargo load floor (1) to remove.



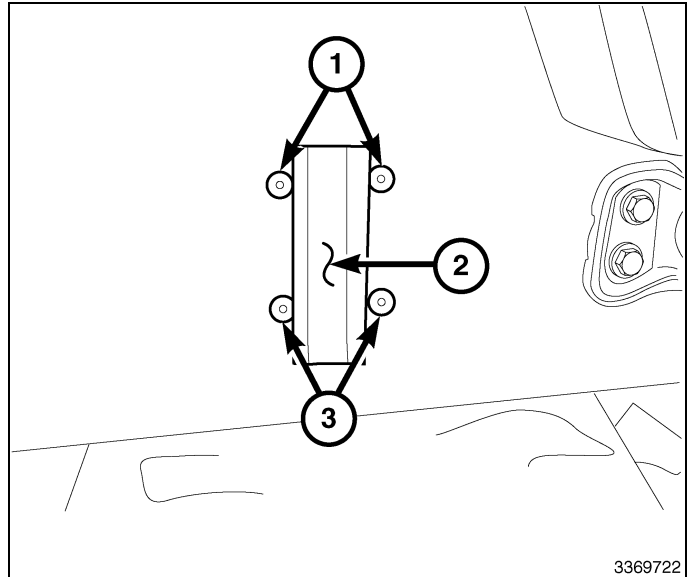
8. Position the docking station (1) in the approximate position shown on the left side of the cargo area.
9. To determine the mounting location, measure 12.7 cm (5 inches) from the seat bracket to the edge of the docking station (2) and 2.54 cm (1 inch) from the floor of the cargo area to the bottom of the docking station (3).
10. With the docking station in the correct position, drill a 3/16 inch pilot hole in each location (4).
11. Remove the docking station and drill four 3/8 inch holes (4) to mount scrivenets.
12. Using the drill, remove some material from the inside of the holes that were just drilled. This is necessary to give the scrivet base room enough to expand when installed.



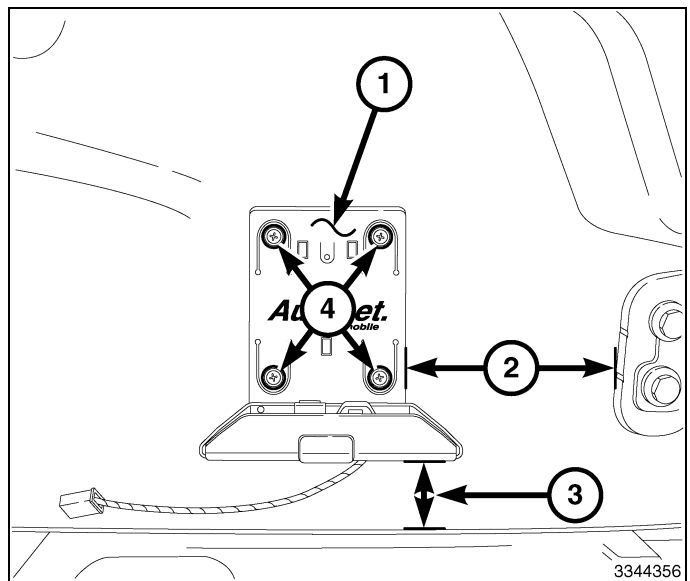
13. Place the docking station face down on a flat surface.
14. Obtain one strip of velcro and separate the two halves. Remove the adhesive backing from one side and place the velcro strip with the adhesive backing face down (2) on the back of the docking station (1). Press the adhesive firmly to the docking station to ensure it is secured.



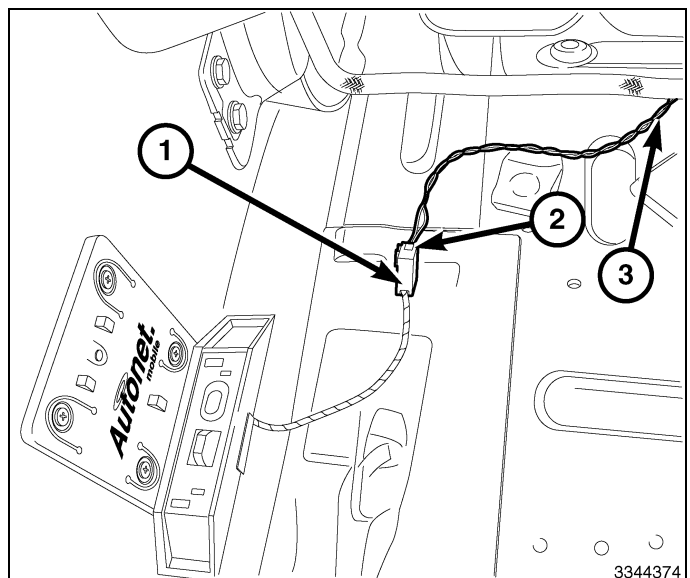
15. Remove the adhesive backing from the other side of the velcro.
16. In the same location that the docking station will be mounted, place the velcro strip (2) with the adhesive side towards the wall of the cargo area. Press firmly to ensure the adhesive makes good contact with the wall.
17. Install the four scrivet inserts (1, 3).



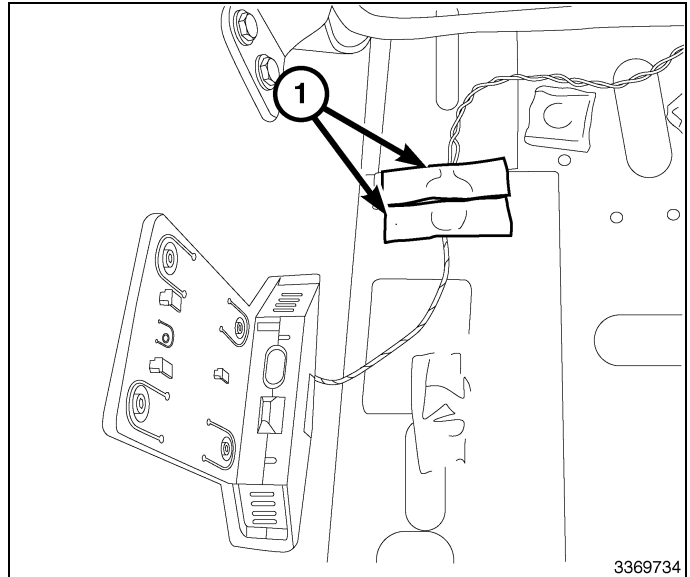
18. With the docking station in the measured location, install the four plastic screws (4) into the scrivet inserts.



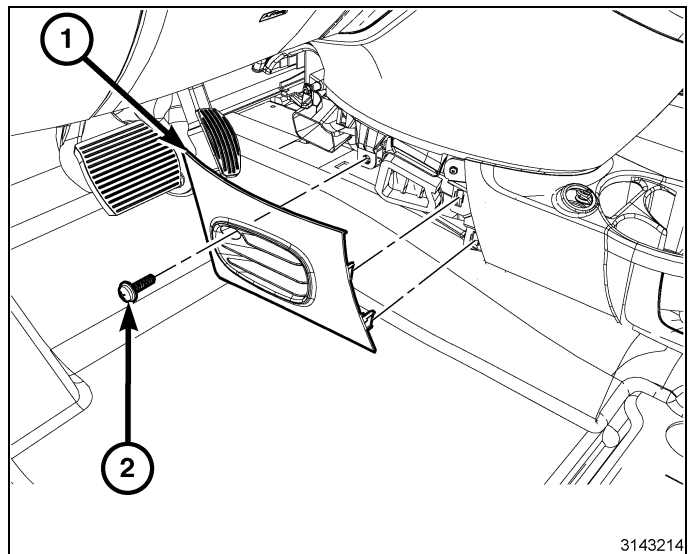
19. Connect the power connector (1) from the Wifi docking station to the wiring harness connector (2).
20. Place a piece of tape on the connectors to keep them in position while routing wires in the next steps.
21. Route the wiring harness (3) under the carpeting below the rear seats.



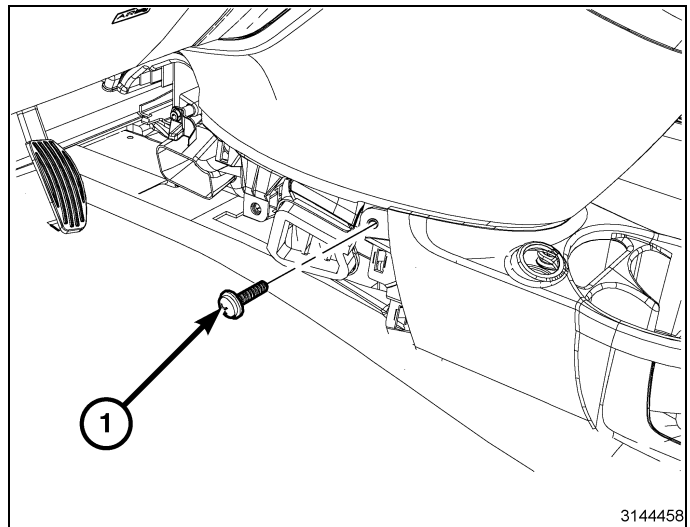
22. Trim and place two pieces of foam tape (1) over the connectors as shown. This will help prevent rattling noises and will help protect the connectors from rubbing on the cargo floor.



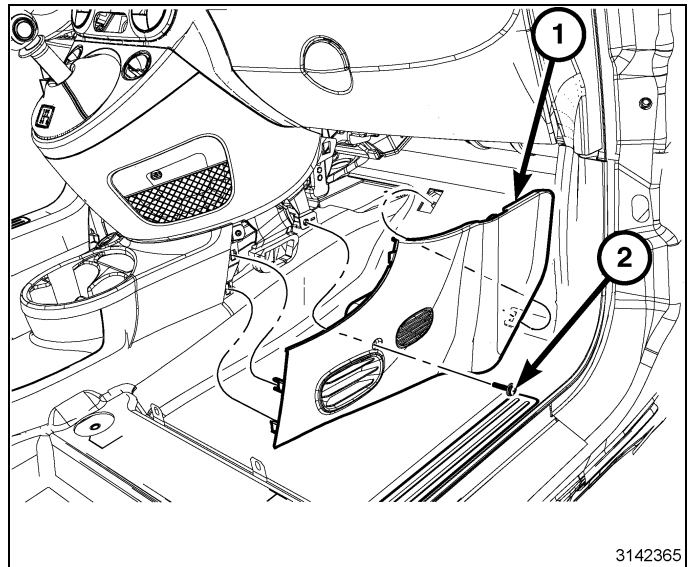
23. Remove the screw (2) from the left side closeout panel (1).
24. Using trim stick C-4755 or equivalent, disengage the rear retaining tabs and remove the left side closeout cover (1).



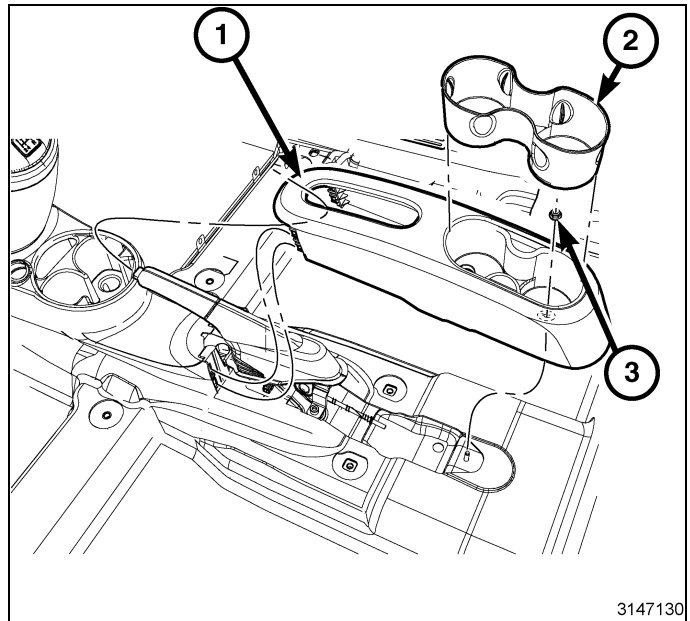
25. Remove the screw (1) securing the front console to shifter bezel cover. Repeat for the opposite side.



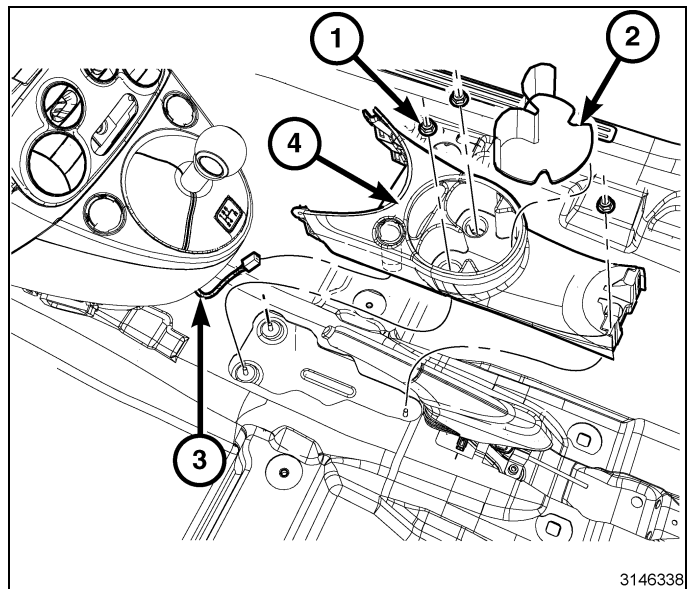
26. Remove the screw (2) from the right side console closeout cover (1).
27. Using trim stick C-4755 or equivalent, disengage the front floor console to closeout cover retaining clips.
28. Pull the closeout cover rearward to disengage the retaining clip in the floor.
29. Remove the closeout cover (1) from the vehicle.



30. Position the parking brake handle up fully.
31. Remove the rear cupholder insert (2).
32. Remove the rear retaining nut (3) located in the rear cupholder cavity.
33. Pull the rear floor console rearward to disengage the front to rear floor console retaining clips/tabs.
34. Slide the rear floor console (1) over the parking brake handle and remove from the vehicle.

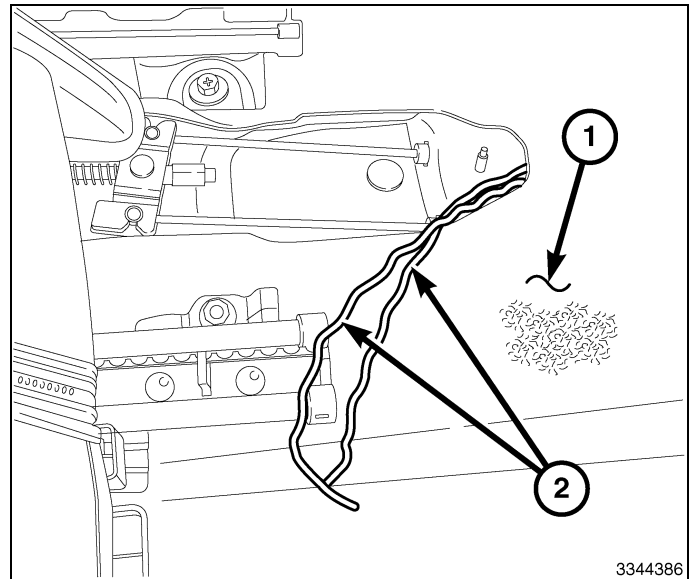


35. Remove the front cupholder insert (2).
36. Remove the retaining nuts (1) located in the cupholder cavity and in the rear of the front floor console (4).
37. Pull the floor console rearward slightly and disconnect the 12V power harness (3).
38. Remove the front floor console (4) from the vehicle.

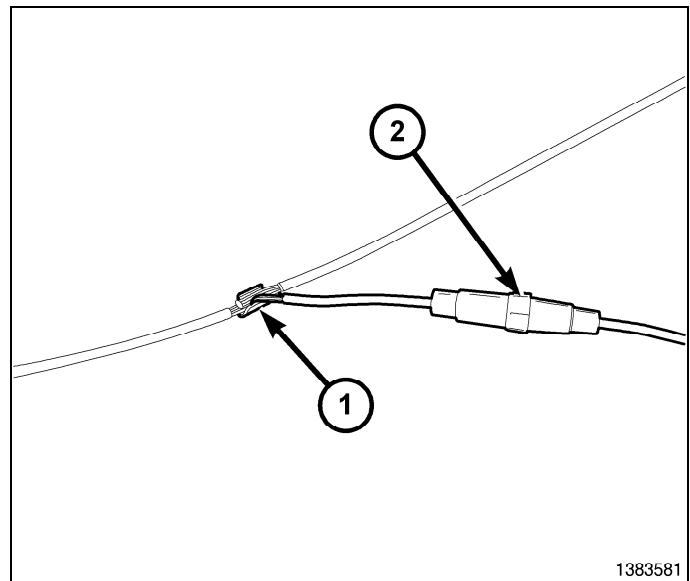


NOTE: While routing wires under the carpet and along the floor console, ensure that the wires are positioned away from the parking brake wires to prevent any rubbing damage.

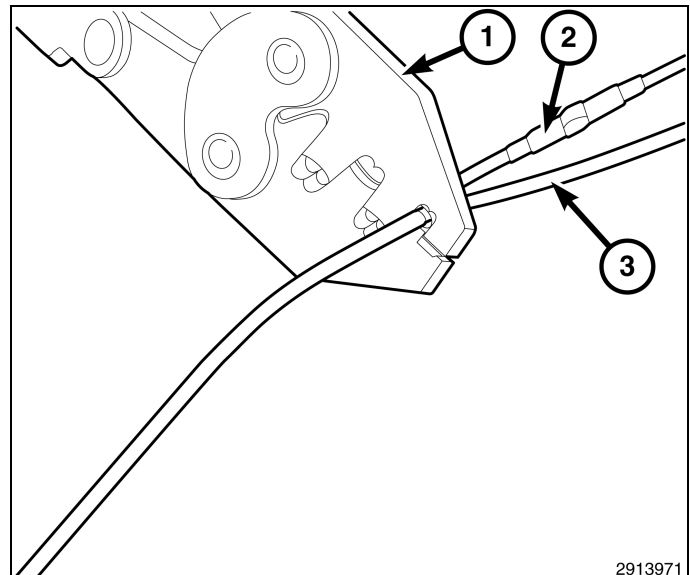
39. Route the Wifi wires (2) under the rear seat underneath the carpet (1).
40. Lift the carpet (1) and bring the wires from under the carpet into the opening for the floor console.
41. Route the wires under the carpet along the way to the front console, near the 12V keyed power outlet.



42. Locate the power outlet wiring harness in the front of the center console.
43. Splice the supplied fused pigtail (2) into the cigarette lighter power wire and in series with the Wi-Fi power harness.
44. Remove 13 mm (0.5 in.) of insulation from each wire that needs to be spliced.
45. Place a piece of adhesive lined heat shrink tubing on one side of the wire. Make sure the tubing will be long enough to cover and seal the entire repair area.
46. Place the strands of wire overlapping each other inside of the splice clip (1).

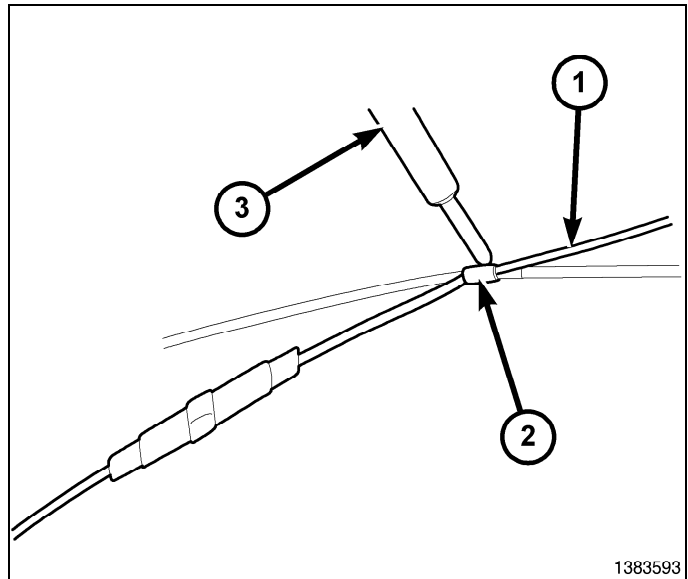


47. Using crimping tool (1), Mopar p/n 05019912AA or equivalent, crimp the splice clip and wires together.

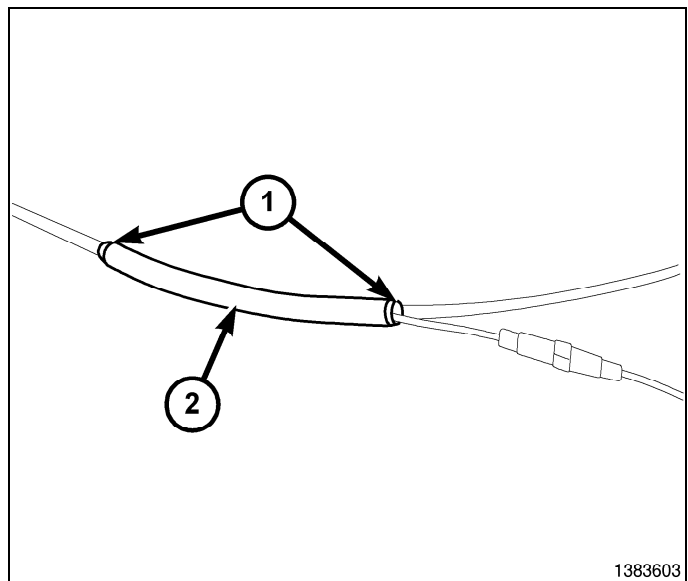


CAUTION: Do not use acid core solder.

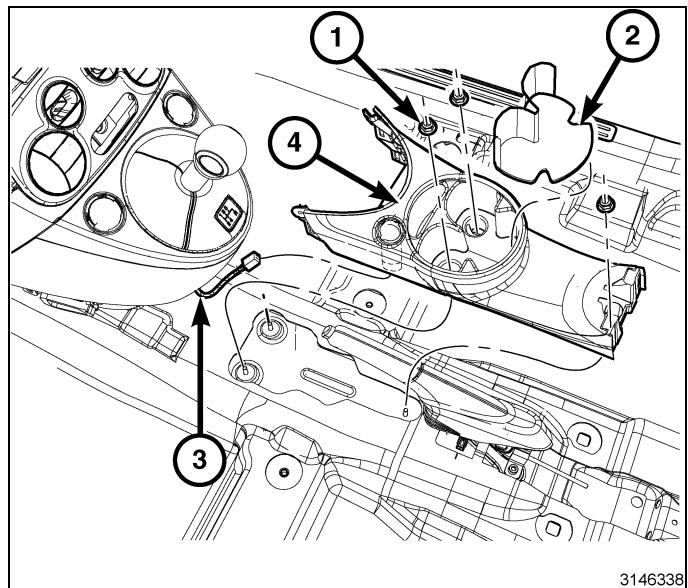
48. Solder (3) the connection (2) together using rosin core type solder (1) only.



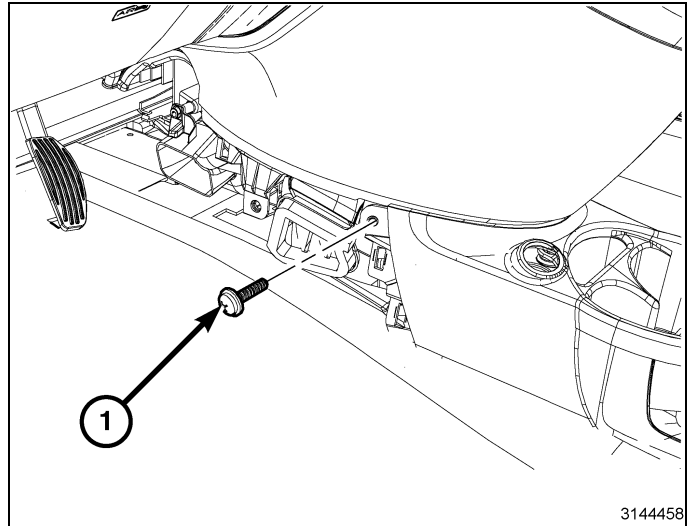
49. Center the heat shrink tubing (2) over the joint and heat using a heat gun. Heat the joint until the tubing is tightly sealed and sealant (1) comes out of both ends of the tubing.
50. Repeat the steps above to splice the ground cable from the Wifi unit to the ground wire of the power outlet harness.



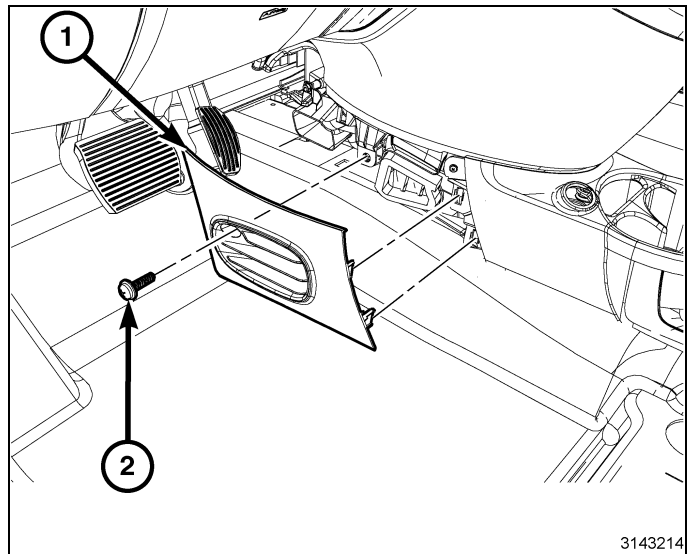
51. Connect the 12V power harness (3), position and align the front floor console (4) in the vehicle.
52. Install the retaining nuts (1) located in the cupholder cavity and in the rear of the front floor console (4). Tighten the retaining nuts securely.
53. Install the front cupholder insert (2).



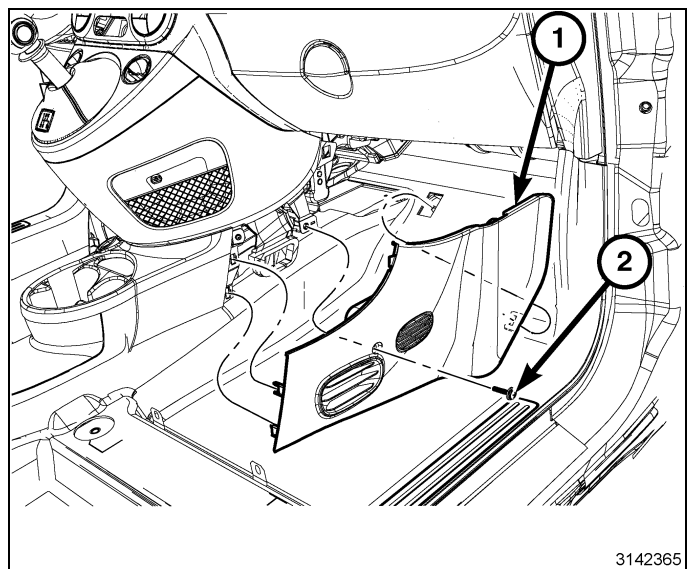
54. Install the screw (1) securing the front console to shifter bezel cover. Tighten the screw securely. Repeat for the opposite side.



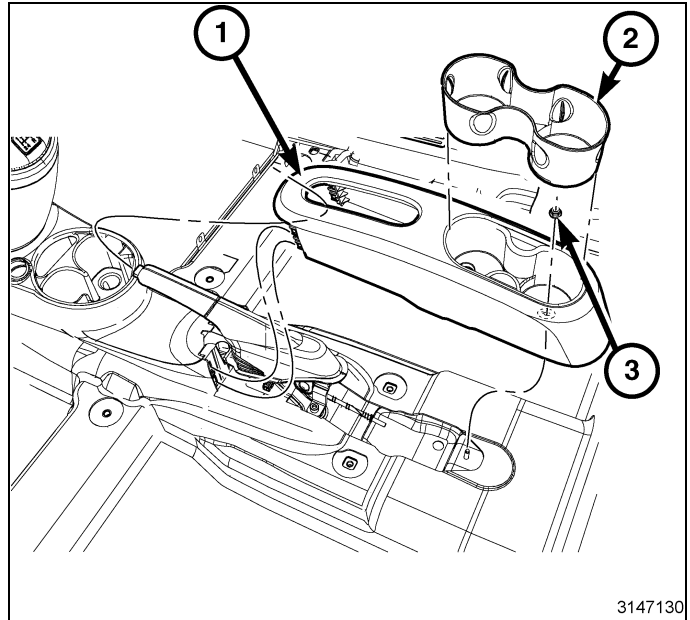
55. Position the left side closeout cover (1) and hand tap to engage the rear retaining tabs.
56. Install the screw (2) to the left side closeout panel (1). Tighten the screw securely.



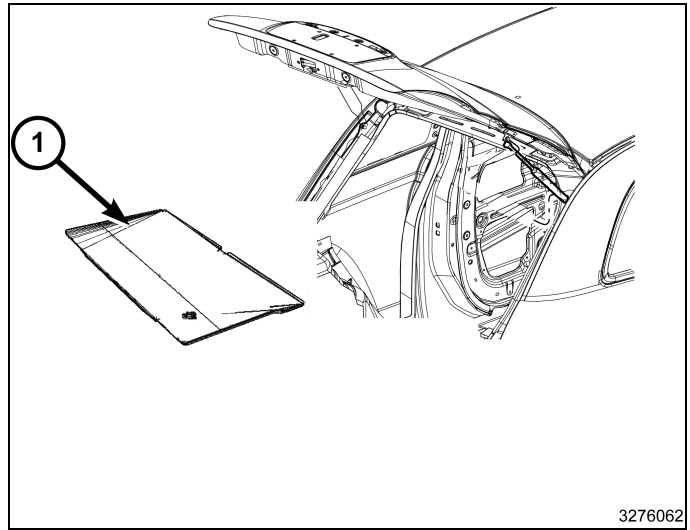
57. Position the right closeout cover (1) into the vehicle push forward to engage the retaining clip in the floor.
58. Hand tap to engage the front floor console to closeout cover retaining clips.
59. Install the screw (2) to the right side console closeout cover (1). Tighten the screw securely.



60. Slide the rear floor console (1) over the parking brake handle and position into the vehicle.
61. Push the rear floor console forward to engage the front to rear floor console retaining clips/tabs.
62. Install the rear retaining nut (3) located in the rear cupholder cavity. Tighten the nut securely.
63. Install the rear cupholder insert (2).
64. Position the parking brake handle down fully.
65. Connect the negative battery cable.



66. Load cargo load floor (1) into vehicle through the lift-gate opening.



67. Install the Wifi router (1) to the docking station (2).
68. Using a Wifi capable device, verify that the router is functioning correctly.

